



4-H Newsletter

OCTOBER 1, 2009

OKEECHOBEE COUNTY 4-H NEWSLETTER

OCTOBER 2009

Dear 4-H Family,

I am so proud of our Okeechobee 4-Hers. You are hard working, motivated, dedicated, polite, and on top of all that, you are "**good kids**".

The record books will be available to pick at the Awards Banquet on October 10 at Okeechobee High School. Record books not picked up at the banquet will be available at the Extension Office. Please pick up your record books and awards. The record books will come in handy when you begin working on next year's project.

Good luck to the youth that weighed in steers for the Okeechobee Youth Livestock Show and South Florida Fair.

I am very pleased with the increase in enrollment I see this year. This tells me that our leaders are doing a great job and Okeechobee is discovering how wonderful 4-H is.

Remember that National 4-H Week is October 4-10. Do your part to share 4-H with the world. Plan to attend and help with our **4-H BBQ Dinner on October 23.** We need your help to make this a success. The money we raise will benefit **all** 4-Hers and Leaders.

Continue to make your best better.

Sincerely,

Debbie S. Clements

Extension Agent III, 4-H/FCS

DSC/lmg



"TO MAKE THE
BEST BETTER"

Okeechobee IFAS
Extension Service

458 Hwy 98 N

Okeechobee, FL

(863) 763-6469

(863) 763-6745

We're on the Web!

okeechobee.ifas.ufl.edu

IT IS TIME TO
ENROLL FOR THE
2009-2010 4-H
YEAR.

PICK UP YOUR NEW
ENROLLMENT FORMS
AT THE EXTENSION
OFFICE!!

THE ENROLLMENT
DEADLINE TO
PARTICIPATE IN
OYLS IS OCTOBER
31, 2009!

ALL 4-H MEMBERS
MUST ATTEND THE
OCTOBER PROJECT
CLUB MEETING AND
BE ENROLLED BY
OCTOBER 31, 2010.

TERMS OF
ENROLLMENT:

ENROLLMENT AND
PARTICIPATION
FORMS FILLED OUT
COMPLETELY AND
TURNED INTO THE
EXTENSION OFFICE
BY THE DEADLINE.

THERE WILL BE NO
EXCEPTIONS TO
THIS RULE!



Absolutely Splitting Hares

By: Sheryl Heater

Our first meeting was held on September 21 at the Extension Office. We welcomed two new members and expect more new members next month. All of our past members also have or are returning. We discussed our yearly plan and added a couple of ideas. There will be an ARBA rabbit show in Bartow on October 10 and several members have planned to attend. Officers were elected and are as follows:

- President Damon Heater
- Vice President Jessica Burkhalter
- Recorder Kaylie Corby
- Chaplain Becca Corby
- Secretary/Treasurer Will be decided at October meeting

Everyone should have their project rabbit(s) or be close to getting it. Remember, you must show a pure bred rabbit that is at least 180 days (6 months) old. If anyone still needs a rabbit please call me and I will help you find one. You can reach me at 863-697-6449. Leave a message and I will call you back.

Our next meeting will be held at the Extension Office on October 13 at 6:30 pm. If you really want to learn about your rabbit and how to successfully show then this is the club for you! Hope to see you there!

Bacon Bunch

By: Meaghan Thomas

The Bacon Bunch club held its first meeting of the new year on September 10. At the meeting we introduced the 2009-2010 club officers. They are as follows:

- President Shyanne Prescott
- Vice President Kasey Durand
- Secretary Maya Kneidel
- Reporter Meaghan Thomas
- Treasurer Allyson Matthews
- Historian Ashley McDuffie
- Chaplin Dalton Harris
- Sgt. of Arms Cody Prescott

This is going to be an exciting year!!

Reminders:

- October 10 - annual 4-H Awards Banquet
- October 23 - the annual 4-H Foundation BBQ Fundraiser at the Freshman Campus
- October 31 - everyone must be enrolled in 4-H
- People showing at the South Florida Fair should have a pretty good idea about where they are getting their hogs from.
- People showing in the Okeechobee Youth Livestock Show need to be thinking about where they are going to get their hogs.

Our next meeting will be on October 8 at Osceola Middle School. It will begin at 6:30pm. We will be having a guest speaker...so be there!

Please turn in your plan of work if you have not already done so.

Reports for the newsletter are due the 20th of each month. Please remember to turn them in on time!!

Report can be turned in to the Extension Office, faxed to (863) 763-6745 or e-mailed to lmhewet@ufl.edu

4-H Age Divisions
As of Sept 1, 2009

Cloverbud: 5-7

Junior: 8-10

Intermediate: 11-13

Senior: 14-18

It's time to sign up to decorate the bulletin

Barnyard Buddies

By: Kaytlynn May

At the last Barnyard Buddies meeting, Becky and Pat Coffey talked about chickens and Ms. Heater talked about different types of rabbits and brought a lot of them to show us. We elected officers at this meeting. They are:

- President Caitlyn Albers
- Vice President Cady McGehee
- Secretary Ryan Albers
- Reporter Kaytlynn May

We discussed the plans for the year and they are very exciting! Our next meeting will be on Saturday, October 10 at 10:00 am at the Extension Office. After a business meeting, we will go on a field trip to a calf barn. Please be on time and wear outdoor shoes. That's it for now, stay tuned for the next newsletter article!

Bits & Spurs

By: Paula Daniel

I would like to present a warm welcome to all our new members and a friendly shoutout to our veterans! We had a great first meeting. Congratulations to all the new officers. I'm sure you will make our club proud. We have many activities and clinics planned for this year. The first of which was a clinic and trail ride at Mi-Cin Ranch on September 26. October 10 will be our saddle cleaning fundraiser at Eli's Trailer Sales, followed by our 4-H Awards Banquet later that evening. Our next meeting will be on October 12 at 6:30 pm. I'm sure this is going to be an exciting year with so many people and ideas!

Chobee Cattle Kids

By: Jenna Wolff

Our first meeting was a huge success. We went over important dates and upcoming events. Mr. Jamie and Mr. Robbie also stressed the importance of care and feed for our show animals. We elected new officers and they are:

- President Marshall Johnson
- Vice President Jessica Humphrey
- Secretary Maci Culligan
- Treasurer Kaley Dees
- Chaplin Natalie Trimble
- Reporter Jenna Wolff
- Historian Allyson Trimble
- Recreation Josh Goforth
- Parliamentarian Josh Lea
- Sargeant of Arms Matthew Evans

Our next meeting is on October 8 at 6:00 pm in Mr. Trimble's Class Room at Osceola Middle School.

Chobee Crackers

By: Crystal Young

Thursday, September 10 we had our first meeting. We talked about ideas for fundraisers and elected our new 2009-2010 officers. They are:

- President Felipe Soto
- Vice President Evan Soto
- Secretary Fernande Shaw
- Treasurer Arturo Salas
- Historian Chiaey Jesus Gencie
- Reporter Crystal Young

We are looking forward to having a great year!

**board again!
Please call the
Extension Office
to reserve your
club's month!**

Chobee Roundup

By: Tuff Durrance

Our meetings have changed from the second Tuesday of the month to the second Monday of the month. Our next meeting will be October 12 at the Osceola Middle School Ag Classroom at 6:30 pm. If you did not attend the first meeting you have to attend the October meeting in order to show at the OYLS show. We will be electing officers and going over the OYLS rules and preparing for our Fall Classic Show in November. Your 4-H enrollment forms are due to the Extension Office no later than October 31. See you at the next meeting!

County Council/Junior Leaders

By: Justin Hoover

Our first meeting was kicked off my voting for our 2009-2010 club officers. They are as follows:

- | | |
|-------------------|----------------|
| ▪ President | Austin Pluskot |
| ▪ Vice President | Justin Hoover |
| ▪ Secretary | Raychel Rabon |
| ▪ Treasurer | Wesley Mims |
| ▪ Reporter | Shiloh Anuez |
| ▪ Parliamentarian | Alex Pluskot |
| ▪ Chaplain | Janna Mullis |

Congratulations to everyone! Members shared their experiences on their summer trips. We discussed the fundraisers for the upcoming year and trips we would like to take. We are looking forward to an exciting new year of learning. Our next meeting will be on October 20 at 7:00 p.m. at the Extension Office. See you there.

Places To Go

By: Pat McCoy

Places To Go met on September 30. We made tissue paper flowers and then cooked out for dinner. We had a lot of 4-Hers come to the meeting!

Our next meeting will be on October 27 at Mrs. McGehee's home at 6:00 pm. We will be doing a fishing activity! Before our next meeting, though, we will meet on October 24 to canoe the Pearce River! See you all there!

Raisin' Em Right

By: Zachary Stripling

I'd like to start my introducing our brand new club, Raisin' Em Right. This is our first year as a new club, although we are not new to 4-H. We have all been an active part of 4-H in the past. Our club leaders are Keith and Angela Pendrey and I can't tell you how exciting it is to be a part of this new club!

Our first official meeting was held on September 17 at the Extension Office. We got a great start. Our new elected officers are:

- | | |
|--------------------|-------------------|
| • President | Shayla Pendrey |
| • Vice President | Caleb Stewart |
| • Secretary | Cristin Shelton |
| • Treasurer | Ashleigh Ezard |
| • Reporter | Zachary Stripling |
| • Sergeant at Arms | John Shelton |
| • Historian | Allison Chandler |
| • Chaplain | Rance Pendrey |

We also went over our bylaws and everyone discussed what each article was about and how it would be implemented in our club. We then went over a few things about the show. Before we closed our meeting we all sang "Happy Birthday" to Cristin Shelton! Happy 17th Birthday! Our next meeting will be October 15 at the Extension Office at 7:00 pm.

Rough Riders: The Next Generation

By: Rene Burks

We had our first meeting on September 15th and elected officers. They are as follows:

- President Katie Brummett
- Vice President Nathan Stewart
- Secretary Amanda Messmer
- Treasurer Morgan Brandel
- Reporter Sierra Coward
- Historian/Chaplin Hunter Bryant

Our next meeting was planned for October 15, but it has changed. Now it will be at Rene Burks' home on October 3 at 11:00 am. We will swim after the meeting so bring your swim suits. On October 24, the Rough Riders will be having a get together and riding clinic at the Agri-Civic Center at 10:00 am. If you have any questions call Suzanna at 634-0253.

Sharp Shooters

By: Ciara Verano

Sharp Shooters had their first meeting on September 17. During the meeting we elected our 2009-2010 club officers. Congratulations to the following:

- Joseph Menendez President
- Travis Muldoon Vice President
- Austin Pluskot 2nd Vice President
- John McGehee Treasurer
- Ciara Verano Secretary/Reporter
- Hayley Davis Chaplain
- Michael Carter Parliamentarian

We also discussed our first shoot, which will be Saturday, September 26 at Hazellief Range. Please arrive by 8:45 am, so that we can start promptly at 9:00 am. Our meetings will continue to be the 3rd Thursday of every month. The 4-H Awards Banquet will be October 10 at the OHS cafeteria. Please pre-purchase your tickets at the Extension Office. We will be contacting members to help decorate. October 23 is the Annual 4-H Barbeque. Please mark this on your calendar and be ready to tell us what hours you can volunteer at the next meeting.

Steaks & Chops

By: Cindy Pearce

Hello Steaks & Chops 4-H members! Things are changing! **Our meetings will now be the third Monday of each month at the Extension Office at 6:30 pm**, so our first meeting will be on Monday, October 19. The club will have new leaders, Cindy and Jason Pearce, who have tons of great ideas for this 4-H year. We are looking forward to seeing and getting to know all of the returning members and any and all new members!

Swine Time

By: Paige Arnold

Welcome back everyone. I hope everyone is excited about 4-H starting back up because I sure am. This year there is one minor change. Our meetings will start at 6:30 every second Tuesday of every month. We will still have our meetings at YMS in the cafeteria. We will be getting our hogs soon so everyone needs to start looking for a place where you wish to purchase your hog from. This year for our community service project we will be decorating a Christmas tree for Hospice's Festival of Trees. So far we have the tree, ornaments, and lights. We need a tree skirt and topper. The colors of the tree are green and yellow. At our next meeting we will need to come up with a craft idea representing 4-H Swine Time and do the craft at the next meeting. I hope to see everyone at the Awards Banquet on October 10. I hope everyone is having a wonderful school year so far. Happy Halloween everyone!

Udder Bunch

By: Emilie Lege

Welcome to another year in the Okeechobee Udder Bunch club! We have many changes this year in leadership, show dates, check-ins and so on. The meetings are now convening on the second Thursday of the month. The next meeting will be on October 8 at 7:00 pm at the Extension Office. Be sure to bring in your Christmas ornaments and your fundraiser orders. We have a Thanksgiving deadline of October 8 and a Christmas deadline of November 12. Entry forms for SFF, FSF and KVLS are due on November 20. Please note that all youth animals will check in at the FSF on WEDNESDAY this year and stay through Monday. This is a major change.

We would like to welcome Mr. Randy Burnham as the new Udder Bunch Advisor and thank Mrs. Denise Burnham for her many years of leadership as the club Advisor. This looks to be a promising year. See you at the meeting!

Wild Bunch

By: Cindy Letcher

The Wild Bunch had its first meeting on Saturday, September 26 at Arnold's Wildlife Center. Some of the things we are planning for this year include visits to the Dryer Park and Brevard Zoos, the South Florida Fair, and the Okeechobee Youth Livestock Show, as well as participation in the 4H BBQ Fundraiser, Arnold's Wildlife Center's Open House, and Farm City Day.

The Wild Bunch Club is not a competition/showing type club, but a few of our members have showed small animals at the Livestock show. Our club members need to be eight years old or older, and we welcome parent involvement. There are no dues to be a member of Wild Bunch.

Our next meeting will be on Friday, October 30 at 4:30 pm at Arnold's Wildlife Center. We plan to build a display for the Open House that afternoon. If you have any questions, feel free to call Cindy Letcher at (863) 801-3141 or Doni Sheffield at (863) 357-9453.

*No news submitted from Beef-N-Bacon Raisers, On The Hoof or Places To Go.
Members of this club should contact your leader for more information.*



October 10

4-H Awards Banquet
Chinese Auction - 4 pm
Awards - 5 pm
Dinner - 6 pm

Awards to continue after dinner
Buy your tickets for \$2 at the Extension Office.
(\$5 at the door)

October 20

County Council/Junior Leaders Officer Training
7:00 pm at the Extension Office
See flyer for more information

October 23

Annual 4-H Foundation BBQ Fundraiser
Okeechobee Freshman Campus

October 31

4-H Enrollment Deadline

Must be enrolled and have attended the October club meeting by the deadline in order to participate in the Okeechobee Youth Livestock Show.



2010 Okeechobee Youth Livestock Show

ENTRIES & INITIAL WEIGH-INS

Steer	September 12, 2009 Okeechobee Livestock Market	8:00 – 10:00 AM
Beef Breeding	November 2, 2009 Extension Office	Before 5:00 PM
Swine	December 5, 2009 Agri-Civic Center	8:00 – 10:00 AM
Lamb	December 12, 2009 Agri-Civic Center	8:00 – 10:00 AM
Dairy, Rabbit, Poultry	January 4, 2010 Extension Office	Before 5:00 pm

*Complete OYLS Rule books are available at the
Okeechobee Extension Office.*

Remember – you must have a CURRENT Ethics Certification to participate in the FSF, SFF and OYLS.

You are invited to the...

2008-2009
Okeechobee 4-H Foundation
Awards Banquet

Saturday, October 10, 2009
Okeechobee High School Cafeteria

Chinese Auction	4:00 PM
Awards	5:00 PM
Dinner	6:00 PM

Awards will resume after dinner

Please R.S.V.P. with the Extension Office
at (863) 763-6469 before October 7th

Tickets will be \$2 before the deadline or \$5
at the door

Bits & Spurs 4-H Club

Saddle Cleaning & Oiling Fundraiser

At Eli's Trailer Sales

October 10, 2009

9:00 am - 12:00 pm

Contact 4-H Office

863-763-6469



**ARE YOUR SHOW CALVES ALL YOU WANT THEM TO BE?
DO YOU NEED TO IMPROVE YOUR SHOW SKILLS?**

**COME TO THE BEEF & BACON
FITTING & SHOWMANSHIP CLINIC**

**October 10 , 2009
Hardee County Cattlemen's Arena
Wauchula, Florida**

**Sponsored by Hardee Beef & Bacon 4-H Club
Instruction provided by B & R Club Calves
Roy Petteway & Brittney Pederson**

Tentative Schedule

7 a.m. - 8 a.m. - Cattle arrive – please be clean & dry
8:15 a.m. - Nutrition & Daily Care
9:30 a.m. - Clipping Demonstration
11:30 a.m. - Fitting Demonstration
12:30 p.m. - Lunch Provided
1:30 p.m. - Showmanship instruction
4:30 p.m. - Wrap-up/Question & Answer Session

***Bring your calves for hands-on showmanship
instruction!***

Cost is \$25 per exhibitor – parents are welcome to attend at no
charge

(LIMITED TO THE FIRST 25 ENTRIES)

Entry Form is available at www.ruddsshowsupply.com
or www.citrusandcattle.com

Call 863-781-3984 or 863-781-3986 for information
T-Shirt & Lunch will be provided, entry deadline is October 1, 2009

**HARDEE COUNTY BEEF & BACON CLINIC
ENTRY FORM**

NAME _____

ADDRESS _____

PHONE

T-SHIRT SIZE (please circle) S M L XL XXL
(one per exhibitor, adult sizes)

How many in family will be attending? _____

Will you bring a steer/heifer? Yes No

Please make check payable to:

**Wendy Petteway
2150 Ramon Petteway Road
Zolfo Springs, FL 33890**

**PLEASE SEND CHECK & ENTRY BY
OCTOBER 1, 2009**

*No grooming chutes, please.
A pre-arranged show calf will be used for fitting & clipping demonstration purposes.
You will be able to use your calf after lunch for the showmanship instruction.
Bring your own water buckets.*

Officer Training Workshop

County Council/Junior Leaders are hosting a workshop for all 2009-2010 4-H club officers, anyone looking to make their best better are invited to attend.

When: October 20, 2009 at 7:00pm
Where: Extension Office

We will be serving pizza and goodies along with all the knowledge and information you can fill your mind with.

Come join in the fun and let's help make this the best 4-H year yet! We are looking forward to everyone's attendance, hope to see you there!!



2009 St. Lucie County 4-H Beef Classic

October 23-24, 2009

Entry Form

Entry Fees: Steer/Heifer/Bull \$25.00 per calf entry
 Showmanship Class \$15.00
 Late fee \$10.00 per animal after October 6th

Make checks payable to: St. Lucie County 4-H Foundation

Mail entries to: Sue Munyan, St. Lucie County 4-H Extension Office, 8400 Picos Rd., Fort Pierce, FL 34945-3045

Questions: Call Sue Munyan- 772 462-1660

Exhibitor: _____ **Age:** _____

Address: _____

City: _____ **Zip:** _____

Phone Number: _____ **County:** _____

4-H Club Name/FFA: _____

Heifer/Steer/Bull	Tag#/Tattoo	\$25 per head
_____	_____	\$ _____
_____	_____	\$ _____
_____	_____	\$ _____
_____	_____	\$ _____
_____	_____	\$ _____
_____	_____	\$ _____
Showmanship \$15 (circle one) JR INT SR Adult		
(8-11)(12-15)(16-18)(19-21)		\$ _____
Late Fee \$10 (postmarked after October 6, 2009)		\$ _____
Total Amount Paid		\$ _____

2009 St. Lucie County 4-H Beef Classic October 23-24, 2009 St. Lucie County Fair Grounds Fort Pierce, Florida

Arrival Times: October 23, 2009 - 1-5 PM
October 24, 2009 - 7-9 AM

Show Times: October 23, 2009 - 6 PM Showmanship
October 24, 2009 - 10 AM
Steer show, followed by heifers then bulls

Premiums:

Grand Champion Steer - \$250
Reserve Champion Steer - \$150

Grand Champion Overall Heifer - \$250
Reserve Champion Overall Heifer - \$150

Grand Champion Overall Bull - \$100
Reserve Champion Overall Bull - \$75

Showmanship Winners - belt buckles

Directions: From West (Okeechobee): On State Road 70, drive 25 miles east from the Hwy 441 and State Road 70 intersection. Turn right (south) on Peacock Road and travel south to the west gate fairground entrance on the east side of road.

From North or South traveling on I-95: Take I-95 to Exit 129 (State Road 70), go west approximately 7.5 miles. Turn left (south) on Peacock Road and travel south to the west gate fairground entrance on the east side of road.

From North or South traveling on Florida's Turnpike: Take Florida's Turnpike to Exit 152 (State Road 70), go west approximately 7 miles. Turn left (south) on Peacock Road and travel south to the west gate fairground entrance on the east side of road.

2009 St. Lucie County 4-H Beef Classic

Rules

1. Entry deadline is October 6, 2009. There will be a late fee of \$10 per head for cattle entered the day of the show.
2. Entry fees are \$25 per animal, \$15 per animal for showmanship and a \$10 late fee if entered after October 6, 2009. Make checks payable to St. Lucie County 4-H Foundation.
3. Open to exhibitors 8-21 years old.
4. Each exhibitor/owner must assume the responsibility in case of injury or death to his/her animal.
5. There will be no maximum number of entries per exhibitor.
6. All animals must meet health regulations as required by the Florida Department of Agriculture & Consumer Services and be accompanied with proper health certificates.
7. The owner is responsible for the care & clean up of his/her animal & used space.
8. Grooming chutes will be limited to one per exhibitor and will be confined to a designated area.
9. Power is limited so generators are recommended. Generators will not be permitted inside the arena/barn/covered area under any circumstances. Industrial extension cords will be a necessity.
10. No outside bedding will be permitted in the barn.
11. All animals must be tied with both a halter and neck rope while stalled.
12. The barn will close one hour after the show concludes.
13. RV sites available at check-in w/full hook up of electric, water, & sewer for \$25.
14. Night security will not be provided, however every attempt will be made to provide a safe environment for exhibitors and animals
15. Proper dress is required as well as closed toed shoes or boots.
16. Cattle will be released immediately after the show.
17. All cattle will be shown by weight. Cattle will be weighed at time of check-in.
18. Only bulls and heifers that are 2 years old and younger are eligible to show.
19. All bulls must be registered.
20. 10 heifers are required to have a breed show. Same applies for bulls.
21. All classes will be determined by the show committee.
22. All animals must be treated in an ethical and humane manner. Any violation may result in disqualification of the animal and exhibitor.
23. Show management reserves the right to amend, add to, and interpret the above rules.

Every attempt will be made to provide a safe environment for animals and exhibitors. The St. Lucie County 4-H Foundation will not be responsible for any accidents or injuries that occur while in transit or while at the show. Exhibitors or guardians agree to hold and indemnify the St. Lucie County 4-H Foundation and its representatives harmless from any and all liability arising out of exhibitor's use of facilities, including injury or damage to exhibitor/or animals or any participants and public. The St. Lucie County 4-H Foundation will not be responsible for any lost personal items.

Exhibitor Signature

Date

Parent/Guardian Signature

Date



RE: 4H Cattle Prospect (CAT)- October 23 through 25, 2009

We are delighted that you have chosen the Hampton Inn & Suites as the HOST HOTEL for the 4H CATTLE PROSPECT group in October.

We urge you to book as space is limited at your special rate of:

Standard: \$69.00

Studio Suite: \$79.00

Here is the easiest way to book your reservation:

- On-Line, anytime: Our user-friendly URL-
www.fortpiercesuites.hamptoninn.com
- Please click on this link then:
 - Fill in the dates of your arrival and departure and enter
 - In the "group code" space, place the code CAT and enter
 - You can then book your reservation under your special group rate. What could be easier?

The website includes hotel information, maps and directions, as well as points of interests in the Fort Pierce area.

If you prefer, you may call our reservation line at **772-828-4100** for reservations.

We look forward to seeing you at the Hampton Inn & Suites, Fort Pierce. We love having you here!

Sincerely,

Jo Seiler

Jo Seiler
Director of Sales
Hampton Inn & Suites
1985 Reynolds Drive
Fort Pierce, FL 34945
Reservation Phone: 772-828-4100
Fax: 772-828-4101

DeSoto County 4-H
Presents the
2009 BEEF PROSPECT SHOW JACKPOT
November 21, 2009

What is This:
DeSoto County 4-H is
hosting The 2009 BEEF
Prospect Show Jackpot

When is this:
November 21, 2009

Where is this:
DeSoto County Turner Agri-
Civic Center, Indoor Arena

Check In Times:
Saturday Nov 21, 2009
8:00am to 10:00am
Gates open @ 7:30am

FOR MORE INFO CALL:
SHAWN LYONS:
4-H Beef Club Asst. Leader
863-990-3686

Christi Pryor
DeSoto 4-H Agent
863-993-4846
(9am – 5pm)

ENTRIES:

There will be **no** maximum number of entries per exhibitor!!

There is a \$25.00 entry fee per head; \$10 entry for showmanship (must be 8 –18 years old).

Checks need to be payable to DeSoto County 4-H; memo line: Cattle Prospect show.

Use separate entry blanks for each exhibitor

ALL INFORMATION AND SIGNATURES MUST BE COMPLETED

Entries will be accepted at check-in. A \$10 late fee will be applied to each entry.

No refunds on pre-registrations. You can substitute a different animal or exhibitor.

SHOW REQUIREMENTS:

Only heifers that are 24 months old and younger are eligible to compete in the heifer show.

Commercial heifers (non-registered) must not have shed their baby teeth. Any heifer missing or showing their adult teeth if mouthed will be disqualified.

All cattle will be weighed at time of check-in.

Heifer and steer classes will be determined by the show committee.

PREMIUMS:

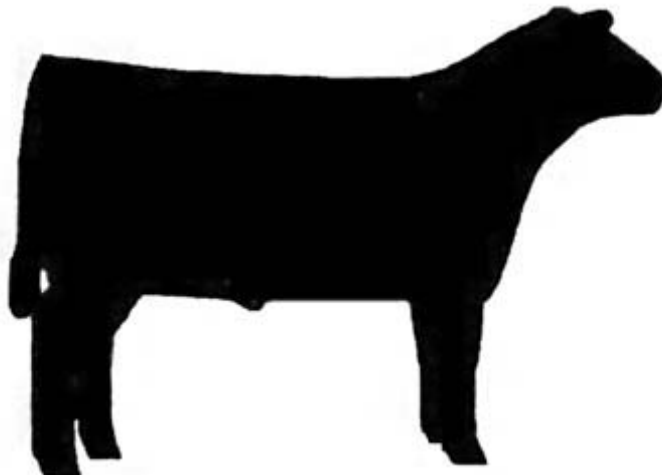
Supreme Grand Champion Heifer – 250

Supreme Reserve Champion Heifer – \$150

Grand Champion Steer – \$250

Reserve Grand Champion Steer – \$150

Showmanship winners will receive – \$100.



DeSoto County 4-H

Presents the

2009 BEEF Prospect Show Jackpot

November 21, 2009

Arrival Time: Gates will be open at 7:30 pm

Check-in Times: Saturday, November 21, 2009, 8:00 to 10:00 am

RULES AND REGULATIONS:

1. All exhibitors must be between the ages of 8 and 18 years on November 21st, 2009.
2. All Beef Cattle Breeds on the USDA Recognized Breed's list as of September 1, 2009 will be eligible to compete.
3. Each exhibitor/owner must assume all liability in case of death or injury to his/her animal and any injury or death incurred by his/her animal.
4. All exhibitors competing in showmanship must be between the ages of 8 and 18 years by November 21, 2009.

ENTRIES:

1. There will be no maximum number of entries per exhibitor.
2. There is a \$25 entry fee per head; \$10 entry fee for showmanship (must be 8-18 years old). Checks need to be payable to DeSoto County 4-H; memo line: Cattle Prospect Show.
3. Use separate entry blanks for each exhibitor.
4. ALL INFORMATION AND SIGNATURES MUST BE COMPLETED.
5. Entries will be accepted at check-in. A \$10 late fee will be applied to each entry.
6. No refunds on pre-registrations. You can substitute a different animal or exhibitor.

HEALTH REGULATIONS:

1. All animals must meet health regulations as specified in the Rules for Exhibition as required by the Florida Department of Ag & Consumer Services. A local vet is also a source for this information.
2. To expedite entry into the show, ear tags that correspond to health papers are recommended.
3. No unloading without visual inspection and current health paper.

GENERAL:

1. The owner is responsible for the care and clean up of his/her own animals.
2. Grooming chutes must be confined to the areas designated.
3. Power is limited so generators are recommended.
4. All exhibitors must double tie their animals with a neck rope.
5. No equipment, chairs, grooming chutes, show boxes, bales of hay, bags of feed, etc are allowed in the bedding area. **ONLY CATTLE ARE ALLOWED IN BEDDING AREA.**

ATTIRE:

1. **REQUIRED DRESS CODE:** All exhibitors will be required to be neat and clean. Closed toe shoes or boots are required.

RELEASE:

1. Cattle will be released after the conclusion of show.

SHOW REQUIREMENTS:

1. Only heifers that are 24 months old and younger are eligible to compete in the heifer show. Commercial heifers (non-registered) must not have shed their baby teeth. Any heifer missing or showing their adult teeth if mouthed will be disqualified.
2. All cattle will be weighed at time of check-in.
3. Heifer and steer classes will be determined by the show committee.

PREMIUMS:

1. Supreme Grand Champion Heifer - \$250
2. Supreme Reserve Grand Champion Heifer - \$150
3. Grand Champion Steer - \$250
4. Reserve Grand Champion Steer - \$150
5. Showmanship winners will receive \$100.00

SHOW CONTACT INFORMATION:

DeSoto County 4-H
Attn: Christi Pryor
2150 NE Roan St
Arcadia, FL 34266
863-993-4846
941-809-5596

or

DeSoto County 4-H
Attn: Shawn Lyons, 4-H Beef Club Asst. Leader
2150 NE Roan St
Arcadia, FL 34266
863-990-3686

ATTENTION HORSE MEMBERS!!

Effective October 1 (Thursday!), youth under 16 riding horses on public land (roads, parks, schools, public trails, etc.) will be required to wear a helmet according to the new state law. Many have referred to the 4-H program's helmet policy for Area and State shows as the helmet "law", but now there really is a state law. It is suggested that everyone read the original bill and be sure to understand its inclusions and exceptions.

http://laws.flrules.org/files/Ch_2009-105.pdf - actual text of bill

http://www.fldoe.org/GR/Bill_Summary/2009/HB169.pdf - Department of Education summary

The following highlights are copied from the Dept. of Ed. Summary linked above:

- Requires that a child younger than 16 wear a helmet that meets the standards of the American Society of Testing and Materials for protective headgear used in horseback riding and that the headgear is secured with a strap when a child is riding an equine upon the following places:
 - A public roadway or right-of-way,
 - A public equestrian trail, public recreational trail, public park or preserve, or public school,
 - Any other publicly owned or controlled property.
- Requires that a trainer not knowingly rent or lease an equine to a child younger than 16 unless the child has a helmet or a helmet is provided.
- States that a parent or guardian may not authorize a child to violate this act.
- States that a person who violates this act commits a non-criminal violation, punishable by s. 775.083, F.S. (*Note: i.e., a \$500 fine*)
- States that this section does not apply to a child younger than 16 practicing for, riding to or from, or competing in shows or events, including but not limited to, rodeos or parades, riding on private owned land or engaged in agricultural pursuit or practice.
- Provides an effective date of October 1, 2009.

Many of you might already have this well advertised, but I wanted to send as final reminder as the effective date approached!



All horse riders, please read the following story:

I grew up on horseback and under the supervision of very safety conscience parents (if it were up to my mom I would wear a helmet and vest every time I came within 100 yards of our barn...no really, she actually suggested this). As a kid wearing my helmet was like wearing my seat belt, a simple force of habit. However, as I grew older I became both more confident in my skills as a rider and more lax in my observations of basic safety. Sure, I wore a helmet when I jumped over 3'3" or when I was on a greenie or when I was in a show but otherwise my helmet had become more or less a quiet, dark place for spiders to nest. One day I decided to work my older TB gelding on the flat. Normally this would have been a helmetless activity for me but for some reason on that day as an afterthought I grabbed my helmet off a nail in the tack room, wiped some cobwebs out of it and strapped it on my head. A half hour later we were working on canter transitions when he lost his footing and did a summersault. Luckily for my gelding I was there to provide cushioning between him and the ground, he was unscathed. I was not. I do not remember the ambulance ride or the first 6 hours at Shands. I have no idea what my mother must have felt as she drove to the hospital not knowing if her oldest child would pull through. What I do know that I am extremely lucky to have escaped with nothing more than a concussion and a badly bruised rib cage. My spilt second decision to wear a helmet that morning was the difference between a ride in an ambulance and a ride in a hearse.

Please understand that when this incident occurred I had over 15 years of riding experience under my belt, I was a competitive eventer, riding 2-3 horses a day and was known for my ability to stick to just about everything (my nickname around the barn was "Velcro britches"). My gelding was the most trustworthy solid quiet horse I have ever owned. The fact is that accidents happen when you least expect them. Good riders get in horrific accidents. Quiet horses do occasionally cause train wrecks. Please encourage your youth to wear a helmet every ride every time. They are so worth it!

The Top Five Reasons to Wear a Helmet

5. They come in almost every color so you can coordinate them with your polo wraps...and who doesn't need a good excuse to spend more money at the tack store?
4. You are stuck with the brain you were born with...and until they perfect brain transplants I suggest that you take good care of the one you got!
3. A disabling head injury can cost more than \$3 million dollars in lifetime care...think how many polo wraps you could buy with that kind of cash!
2. You are loved. Somebody's whole world would come crashing down if you were hurt or killed in a riding accident.
1. Helmets save lives. Wearing a helmet every ride every time means that you are that much more likely to be able to continue participating in the sport you love!

Happy 4-H'ing!

Meg Brew

4-H Agent I, Marion County

Choosing your First Dairy Project¹

Umphrey, James²

Getting Started

The first dairy calf project your child undertakes may spark a career interest in the dairy industry. It certainly will offer your child many exciting opportunities to travel, gain knowledge, learn responsibility, and form lasting friendships.

When selecting the first project animal, it is important to seek guidance and training from a person knowledgeable of quality characteristics, performance standards and the many requirements of raising and showing dairy calf projects. An experienced club leader, Extension agent or local dairyman can be very helpful in making that first purchase decision. Selecting a quality young heifer challenges even the most skilled person, so working with and learning from the experience of a successful dairyman may help your child make the best selection choice.

Also, you can help your child achieve success by explaining that *knowledge* and *planning* are two key requirements for a successful and fun project for everyone involved. Part of this planning involves understanding the basic selection process.

There are many variables to consider before purchasing a project animal. Of course, you need to plan where you will keep the growing calf, transportation home from the farm and financial arrangements. Financial assistance is often needed when a child purchases the first dairy project animal. Many children save their own money to purchase their animals. As a parent, you may be willing to loan the purchase amount to your child.

However, it is also important to remember that this project is a hands-on learning experience for the child. Therefore, involve the child in the planning and selection processes, and especially the final decision.

Planning the Purchase

Still, there are other factors that require planning and should be decided before visiting the calf farm. Knowing specific features of the desired calf before shopping for it will save money, time and effort. These features include the *breed*, *pedigree*, and *age* of the calf you plan to purchase.

Breed

The five major dairy breeds are Holstein, Jersey, Guernsey, Ayrshire and Brown Swiss. A good, quick reference to use is the Dairy Cow Unified Score Card available from your local Extension agent. The Holstein and Jersey breeds are more popular in Florida and easier to find. Holsteins are also easier to market as two-year-olds after calving. However, Jersey heifers are also good project animals because they are smaller than the other breeds and usually prove easier for children to handle.

Guernsey, Ayrshire and Brown Swiss breeds can be purchased through the Purebred Dairy Cattle Association (PDCA) calf sale each year or privately through a local dairy.

Pedigree: Registered v. Grade

This decision involves selecting a registered animal or a purebred grade animal. Generally, a registered calf 2 or 3 days old will cost between \$150 and \$250. For each additional month of age you can add about \$50 to the cost of the animal. A grade heifer of the same age can be purchased for \$75 to \$125. Remember these are only estimated amounts of an average heifer. High quality calves can cost much more.

Primarily, the registered animal will be more expensive at the time of purchase, but if cared for properly will be worth more than a purebred when sold. Also, a registered animal has more ancestry information than is known about most purebred grades. This may be of some value as you make decisions about breeding her.

In addition, a registered animal can be shown in more places than a purebred grade. For example, only registered animals are allowed to show at the open shows such as a PDCA show and the Florida State Fair.

Nonetheless, a purebred grade animal will be good learning experience for your child's first dairy calf project. It is important to get identification of the calf's date of birth, the sire's identification, the dam's identification and the breeding date that resulted in the heifer you plan to purchase.

Age of the Calf

If the animal is being selected to show, you need to consider the age and birth date of the calf before you purchase it. Animals are placed in classes by their age and breed as they enter shows, so it is important to know the exact age of the calf.

In Florida, calf classes begin March 1, June 1, September 1, and December 1. Calves that are born near the beginning of one of these four months will usually have an advantage in size and growth rate over animals born later.

Selecting an older calf has some advantages over a newborn calf. A calf that is 2 or 3 months old will be easier to care for and will have fewer problems adjusting to a new home. Older calves that have been weaned and appear healthy indicate that they have already gotten off to a good start. Also, death losses are usually minimal with older calves. Another advantage of older calves is that you can better identify and inspect specific structural qualities of the animal.

The big disadvantage of an older calf is the initial cost is greater than that for a newborn calf.

Calf Inspection

Your next choices to make include calf quality and a good location to buy the calf. You can start by asking other 4-H'ers or leaders for personal recommendations, and also by calling a dairyman to arrange a farm visit.

An important advantage of selecting a calf on the farm is being able to observe and compare other animals raised in similar conditions. You can also see the dam of the selected calf to determine its potential of becoming what you want and expect for a successful project.

When visiting the farm, ask to see the calves that meet your decided criteria of breed, pedigree, age and price.

- Observe all calves for growth and thriftiness.
- Observe the overall health condition of the calves.
- Note physical features such as a smooth hair coat, vigorous appetite and normal movement.
- Ask the dairyman if the calves are fed colostrum within the first 12 hours of birth and if their navels are dipped with an iodine dip at birth. These practices are important to ensure a healthy, immunized calf.

As you observe each calf, look for the following traits recommended for potential show-winning calves. The diagrams show the differences in poor, average and good qualities. Further instruction may be supplied by your Extension agent or dairyman.

Breed Character

Breed character as shown in the head and neck and specific color markings can help identify purebred calves. (Again, a good reference to use is the Unified Score Card.) It is especially important for the grade animal to have the appropriate markings and breed character of the breed it represents.

Size

Also, the size and stance of the calf each have a major impact on its ability to do well in the show ring. Select a calf that is tall for her age and tends to walk up-hill, or that appears to be slightly taller at the front than at the rear.

Rear Leg

Most calves improve leg strength as they become older. However, calves with deep heel, strong pastern and good set to the rear legs will likely retain these traits over time. *Avoid calves which have problems with their feet and legs.*

Rump

The width of rump, especially as shown by the pin bones, can be evaluated at this point in the calf. The same is true of the length and flatness of the rump. The correct slope of the rump should be approximately a one-inch drop from the hip bone to the pin bone from a side view. Flatness of the rump may change as the animal matures and has a calf. *Avoid an animal with an extreme slope to the rump. This condition usually makes the legs set too far under the animal. In addition, you should avoid a calf with a reverse slope, where the pin bones are higher than the hips. A reverse slope will worsen over time.*

Dairy Character

Select a calf with a long, lean neck that is sharp over the withers, and that has good openness and sweep to the ribs. *Avoid calves that are rounded over the withers or that are open at the top of the shoulders.*

Bone Substance

The size of the bones in the legs, pasterns, and shoulders suggests the animal's potential structural scale. *Extreme coarseness should be avoided.*

Mammary System

Although you cannot determine the quality of the udder on a young calf or what her first calf will look like, it is important to examine the mammary area carefully. The teats should be of uniform size and shape and placed squarely on the udder. If the dam of the calf is available, look at her udder to predict the future udder shape of your heifer. *Avoid calves with extra teats that cannot be distinguished from the functional ones. The extra teats can be removed if they are small and known to be non-functional.*

Extra consideration should be given to the heifer's future ability to produce milk. This is especially important for the 4-h'ers who intend to keep the calf and develop their own herd.

In addition, if the child plans to sell the animal as a fresh cow or springer, the animal's value will increase if she has high potential to milk well. Because you cannot predict future milk production by direct observation, be sure to look at the production records of the dam. The dam should be an above average producer in the herd from which she came.

Dear Parents

I can still remember the day that I selected my first 4-H project...a dairy calf! I was eight years old, and my father and I had decided to ask the county agent, our friend, to come and help us with the selection.

There were four or five calves in the barn, and it was my responsibility to feed the calves. My father said I could pick one calf from that group and I liked the one named "Boots."

When the county agent arrived, he helped us evaluate the calves. He said that the oldest calf would be the prize winner because it was bigger and more developed than the others. My father said that I could make the final decision - and I did. I really didn't like that big calf; I liked Boots.

So, after hearing all the good advice, I turned to my father with tears in my eyes and announced, "I don't want that big calf. I want Boots as my project! I don't care if I get a white ribbon at the fair!"

Perhaps I was afraid that he would say no, but he didn't. In the end, Boots did receive a white ribbon. But I felt so proud of my first 4-H project because it was a choice I had made for myself, even though it meant winning only a white ribbon.

---A former 4-H member


Footnotes

1. This document is 4H DAP 01, one of a series of the Florida 4-H Youth Development, Florida Cooperative Extension Service, Institute of Food and Agricultural Sciences, University of Florida, August 1996; reviewed January 2009.

2. James Umphrey, Dairy Science Department at the Florida 4-H Youth Development Program, University of Florida Cooperative Extension, Institute of Food and Agricultural Sciences.

The Institute of Food and Agricultural Sciences (IFAS) is an Equal Opportunity Institution authorized to provide research, educational information and other services only to individuals and institutions that function with non-discrimination with respect to race, creed, color, religion, age, disability, sex, sexual orientation, marital status, national origin, political opinions or affiliations. For more information on obtaining other extension publications, contact your county Cooperative Extension service.

U.S. Department of Agriculture, Cooperative Extension Service, University of Florida, IFAS, Florida A. & M. University Cooperative Extension Program, and Boards of County Commissioners Cooperating. Millie Ferrer-Chancy, Interim Dean.





October 2009

Sun	Mon	Tue	Wed	Thu	Fri	Sat
				1	2	3 On The Hoof E.O. - 4:00 pm ***** Rough Riders Renee's House 11:00 am
4	5	6	7	8 Bacon Bunch OMS - 6:30 ***** Chobee Crackers E.O. - 6:30 ***** Chobee Cattle Kids OMS - 6:00 pm ***** Udder Bunch E.O. - 7:00 pm	9	10 Bits & Spurs Saddle Cleaning Fundraiser Eli's Trailer Sales ***** 4-H Awards Banquet OHS Cafeteria ***** Barnyard Buddies E.O. - 10:00 am
11	12 Bits & Spurs ***** Chobee Roundup OMS - 6:30 pm	13 Absolutely Splitting Hares E.O. - 6:30 pm ***** Swine Time YMS - 6:30 pm ***** Beef-N-Bacon E.O. - 6:30 pm	14	15 Sharp Shooters Mr. Sellers' - 7 pm ***** Raisin' Em Right E.O. - 7:00 pm	16	17
18	19 Steaks & Chops E.O. - 6:30 pm	20 CC/JL E.O. - 7:00 pm ***** CC/JL Leadership Training E.O. - 7:00 pm	21	22	23 4-H Foundation BBQ Fundraiser OFC Cafeteria Volunteers Needed! St. Lucie County 4-H Beef Classic ←	24 Bits & Spurs Field Trip Genuine Pleasure Farm ***** Places To Go Canoeing the Peace River ***** SFF Swine Weigh-in ***** Rough Riders Clinic Agri-Civic Center →
25	26	27 Places To Go Ms. McGehee's House 6:00 pm	28	29	30 Wild Bunch Arnold's Wildlife Center 4:30 pm	31 Deadline to enroll in 4-H! (You must be enrolled to by the deadline to participate in the OYLS)